



ATRIUM

ZERO CLEARANCE DIRECT VENT GAS FIREPLACE



Unit Illustrated: MCV42NH Peninsula Fireplace – Natural Gas, MP42GT Glass Tray, MQG5C Glass Media Bronze x (5), MQ42LOG1 Drift Wood Log Set, MP42PL Porcelain Reflective Panel.

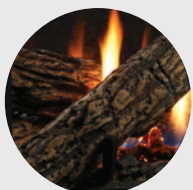
| | | | | |
|----------------------|-----------------|-----------------|-----------------|------------------|
| Model | MCVP42N / NE | MCVP42LP / LPE | MCVP42NH / NHE | MCVP42LPH / LPHE |
| Fuel | Natural | Propane | Natural | Propane |
| Gas Control | Millivolt / IPI | Millivolt / IPI | Millivolt / IPI | Millivolt / IPI |
| Input Max. | 30,250 BTU | 28,500 BTU | 31,250 BTU | 29,000 BTU |
| Input Min. | 21,000 BTU | 23,000 BTU | 21,250 BTU | 23,000 BTU |
| FE (P.4.1-15) | 53% / 54.63% | 53.82% / 55.32% | 64.55% / 66.49% | 65.66% / 67.42% |
| Glass Type | Tempered | Tempered | Ceramic | Ceramic |

CHOOSE LOG GRATE & LOG SET OR GLASS TRAY & MEDIA (REQUIRED FOR EACH UNIT)

LOG SETS



M42LOG4
8 Piece Oak
Log Set



MQ42LOG2
7 Piece Oak
Log Set

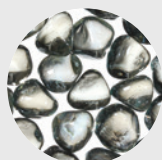


M42LOG3
6 Piece Oak
Driftwood Set



MQ42LOG1
8 Piece Oak
Driftwood Set

MEDIA OPTIONS



MQG5ZG
Zircon Glacier
Ice Glass



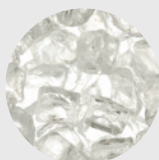
MQG5A
Cobalt
Ember Glass



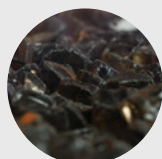
MQG5B
Black
Ember Glass



MQG5C
Bronze
Ember Glass



MQG5W
White
Ember Glass



MQEMBER
Ember
Chunks



MQSTONE
Decorative
Stones



MQROCK2
Natural
Rock Set



MQROCK3
Multi-Colored
Rock Set

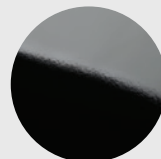


RBCB1
Multi-Colored
Cannonballs

LINERS



Traditional
Brick Liner



Porcelain
Reflective
Liner

REMOTE CONTROLS

Thermostat on/off,
Thermostat on/off
modulating,
Thermostat on/off
modulating
and light control



THERMOSTATS

Wall Mount Thermostat
or Programmable
Thermostat



STANDARD FEATURES

- Dedicated Clean View appliance
- Millivolt or IPI valve system allows operation during a power failure with Hi/Low heat and flame adjustment
- Safety Screen Barrier

OPTIONAL FEATURES

Media Options (Glass Tray Required): Contemporary Rocks, Decorative Stones, Decorative Ember Glass (Glacier Ice, Cobalt Blue, Black, Bronze, White), Ember Chunks or Multi-Colored Cannonballs

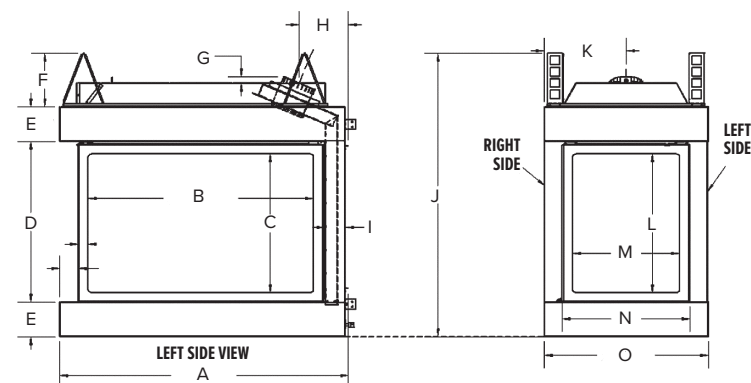
Accent lighting: for use with glass tray

Log Sets (Log Grate or Glass Tray Required): Two Driftwood Sets (6 or 8 Piece), Two Oak Sets (7 or 8 Piece)

Liners: Porcelain Reflective or Traditional Brick

Thermostat: Wall Mount Millivolt or Programmable

Remote Controls: Thermostat on/off, Thermostat on/off modulating, Thermostat on/off modulating and light control



TOP VIEW

P

Q

MQRB4436

A 43 1/16" **J** 42 1/4"

B 33 1/16" **K** 12 1/4"

C 29 5/8" **L** 20 5/8"

D 23 15/16" **M** 16"

E 5 3/16" **N** 19"

F 8" **O** 24 1/2"

G 1" **P** 23 1/2"

H 7 3/8" **Q** 24 1/2"

| MODEL | Height | | Front Width | | Depth | |
|--------|---------|---------|-------------|---------|---------|----------|
| | Actual | Framing | Actual | Framing | Actual | Framing |
| MCVP42 | 42 1/4" | 42 3/8" | 43 1/16" | 42 1/2" | 24 1/2" | 23 5/16" |



Unit Illustrated: MCV42NH Peninsula Fireplace – Natural Gas, MP42GT Glass Tray, MQG5ZG Glass Media – Zircon Ice x (5), MP42PL Porcelain Reflective Liner.



Unit Illustrated: MCV42NH Peninsula Fireplace – Natural Gas, MP42GT Glass Tray, MQG5C Glass Media – Bronze x (5), MQSTONE Decorative Stones, MP42PL Porcelain Reflective Liner.



Unit Illustrated: MCV42NH Peninsula Fireplace – Natural Gas, MP42GT Glass Tray, MQG5C Glass Media – Bronze x (5), MQROCK2 Rock Set – Contemporary Collection – Natural, MP42PL Porcelain Reflective Liner.



ATRIUM

When the view is this good, you want to be able to see it from every angle. That's why the **Atrium by Marquis** is an ideal 3-sided designer option to divide entertaining areas and create maximum impact and warmth. Our Peninsula can be customized with your choice of brick liner, driftwood, logs, ember glass or rocks.

Visit www.marquisfireplaces.net to see the latest evolution in fireplaces.



Unit Illustrated: MCV42NH Peninsula Fireplace – Natural Gas, MP42GT Glass Tray, MQG5ZG Glass Media – Zircon Ice x (2), MP42PL Porcelain Reflective Liner.



Unit Illustrated: MCVP42NH Peninsula Fireplace – Natural Gas, M42LG Log Grate, MQ42LOG2 Oak Log Set, MP42RLT Traditional Brick Liner.



Marquis Fireplaces maintains a program of continuous testing refinement and improvements of all its products. Some aspect of units shown here may be changed at any time without notice or obligation.

Certification: MCVP42N, MCVP42NE, MCVP42LP, MCV42LPE are Certified to: ANSI Z21.50-2014, CSA 2.22-2014, CGA 2.17-M91 (R2009) Vented Gas Fireplace. MCVP42NH, MCVP42LPH, MCVP42NHE, MCVP42LPHE are Certified to: ANSI Z21.88-2014, CSA 2.33-2014, CGA 2.17-M91 (R2009) Vented Gas Fireplace Heater.

Note: Components may have to be ordered separately to create a complete unit. Discuss with your local Marquis Dealer for clarification.



FOR CALIFORNIA RESIDENTS ONLY:

WARNING! This product can expose you to chemicals including Carbon Monoxide, that is an externally vented by-product of fuel consumption, which is [are] known to the State of California to cause birth defects or other reproductive harm. For more information, visit www.P65Warnings.ca.gov.

Crafted entirely in Canada, each Marquis fireplace is built to the highest standards and made to last.

LIMITED LIFETIME WARRANTY



2340 Logan Avenue
Winnipeg, Manitoba, CAN
R2R 2V3
Phone: 204.632.1962
Fax: 204.632.1960
marquisfireplaces.net

Printed in Canada
B082 – 09/18

Canada

ENERGUIDE

Look for the **EnerGuide**
Gas Fireplace Energy
Efficiency Rating in this brochure

Based on CSA P.4.1-15