



SPARK

modern fires™

the modern fire company



Linear burner system

- Create custom fireplace installations... single view, see through, three sided or full view firescapes
- Convert wood burning fireplace to gas with a clean modern aesthetic
- Open front fire.. glass doors are not required

To order call: 866-938-3846
Or contact us at: Spark Modern Fires
53 Chestnut Woods Road, Redding, CT 06896

www.sparkfires.com

Linear Burner System

Overview

Applications...The Spark Of Imagination

The linear burner system was developed to serve two common design challenges.

1. Retrofit a wood burning fireplace and convert it to gas without resorting to the use of a gas log set. Typically burners in the 24" to 48" range would be used in existing wood burning fireplaces.
2. Provide a means of creating "custom linear firescapes" with a nationally certified and approved burner system. Typically burners from 48" to 96" would be used by architects and designers to create single view, see through, three sided and four sided viewable fireplaces.

Certifications

The linear burner system was designed and certified under National Standard ANSI Z21.60/ CSA 2.26. This system is approved for use with Natural Gas or Liquid Propane. Approved for use in all 50 states as well as Canada. Before creating a custom fireplace for this system please consult your local/state code requirements.

Fireplace Requirements

The ANSI standard states that this burner system shall be installed in a solid fuel (wood) burning approved fireplace. The firebox and flue must meet current codes for wood burning fireplaces. This can be achieved with traditional masonry or a steel lined firebox within a masonry enclosure with a stainless steel class A flue. Fresh air kits must be a part of the firebox construction. GLASS DOORS can be installed on this fireplace. However, they MUST be fully OPEN when the burner is operating. For multi view fireplaces with glass doors it is required that a minimum of one side is open at all times during operation. The reason for this is to keep the valves and other components from overheating.

Gas Service

A licensed plumber or mechanical engineer should determine the size of the gas line needed. A licensed plumber, gas fitter or other licensed technician should always install new gas lines. Gas lines are required to be pressure tested and inspected by your local jurisdiction. Gas service can be provided and connected from either the side or rear of the Linear burner system.

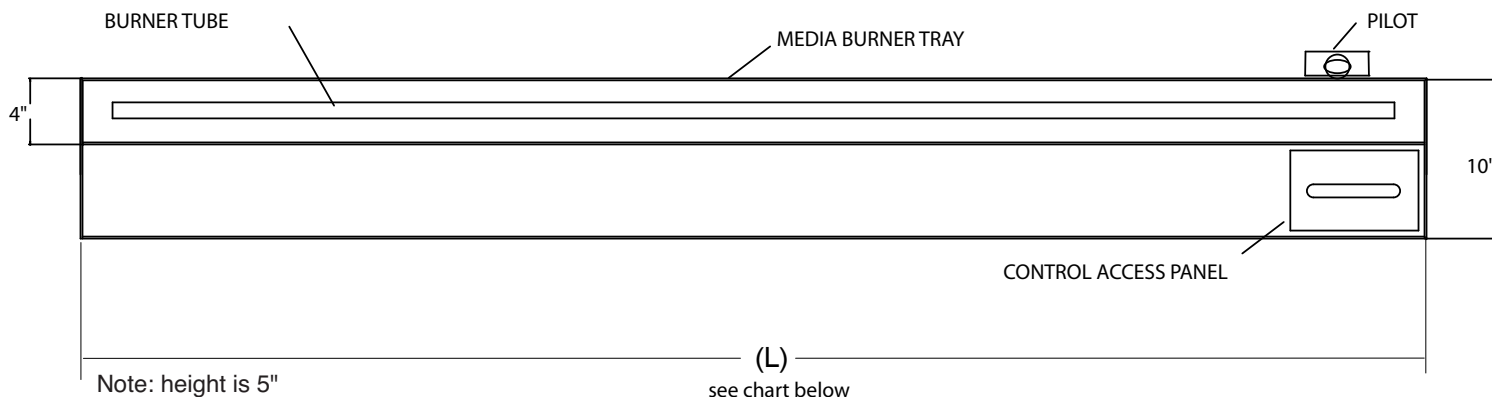


Burner System Features

The system is available in lengths from 24" through 96" in 1' increments.

The burner itself is a media burner which means that it is submerged into a tray and covered with media (broken pieces of tempered glass). A top surface media can be chosen from a list of approved options.

Top View



MODEL #	OVERALL LENGTH (L)	FIREPLACE WIDTH (min)	INPUT RATE (BTU/Hr)	
			N.G.	L.P.
R 24 NG/LP	24"	28"	41,000	33,500
R 36 NG/LP	36"	40"	61,000	54,000
R 48 NG/LP	48"	52"	82,000	72,000
R 60 NG/LP	60"	64"	102,000	90,000
R 72 NG/LP	72"	76"	116,000	110,000
R 84 NG/LP	84"	90"	129,000	128,000
R 96 NG/LP	96"	100"	142,000	146,500

Minimum Fireplace depth required = 14"

Minimum Fireplace height required = 18"

Burner Installation

The unit can set up directly in the firebox with no other adornments. However, it is acceptable to conceal all parts of Linear Burner except the flame compartment with a steel plate (creating a false floor). This should be templated after the unit is installed and allow for unobstructed pilot light operation, unobstructed burner tray function and a removable access panel for valve controls. There are documents available to illustrate how the templating would work. Continuous fresh airflow must be allowed to flow to the bottom of the burners. Fresh air kits to the outside and /or a front grill for room air to the burner are required.

Flue Fans And Mechanized Dampers

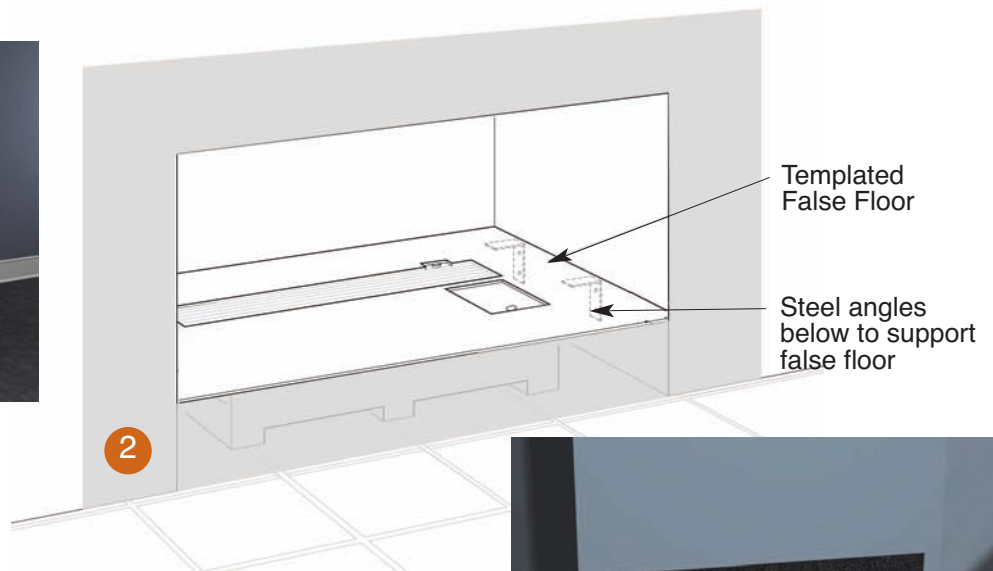
It is recommended that mechanized flue fans and dampers be used to ensure proper flue operation. When a burner of 60" or more is utilized it is strongly recommended that mechanized flues be integrated into the fireplace design. A vendor such as Exhausto (exhausto.com) can provide these essential components.

Electricity

Linear burner system system works off of a millivolt system. Electricity is NOT required for operation of the linear burner. Once the pilot light is lit, a remote control turns the burner on/ off. Electricity would be required to operate mechanized flue fans or remote dampers. Priority wiring can be utilized to ensure that the fans are operating and the dampers are open before burners ignite.

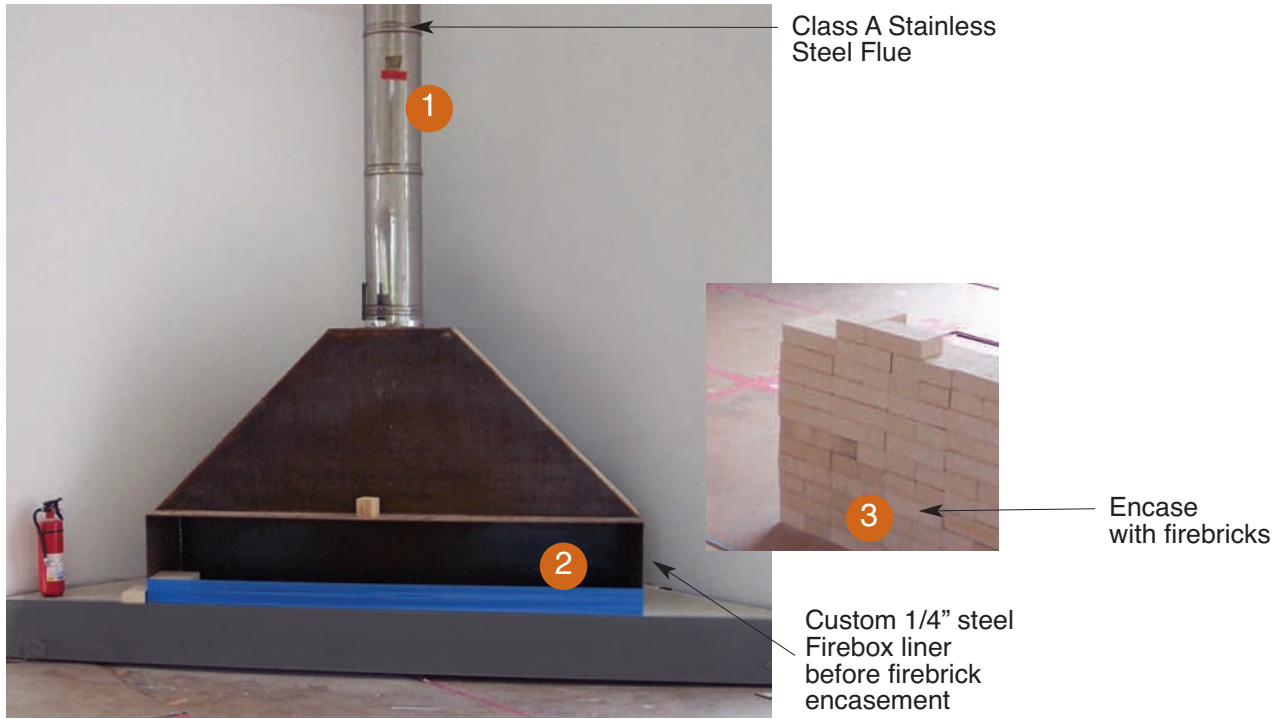
Convert or Retrofit your fireplace

The process to convert or retrofit the linear burner system into an existing wood burning fireplace.



Custom fireplace application

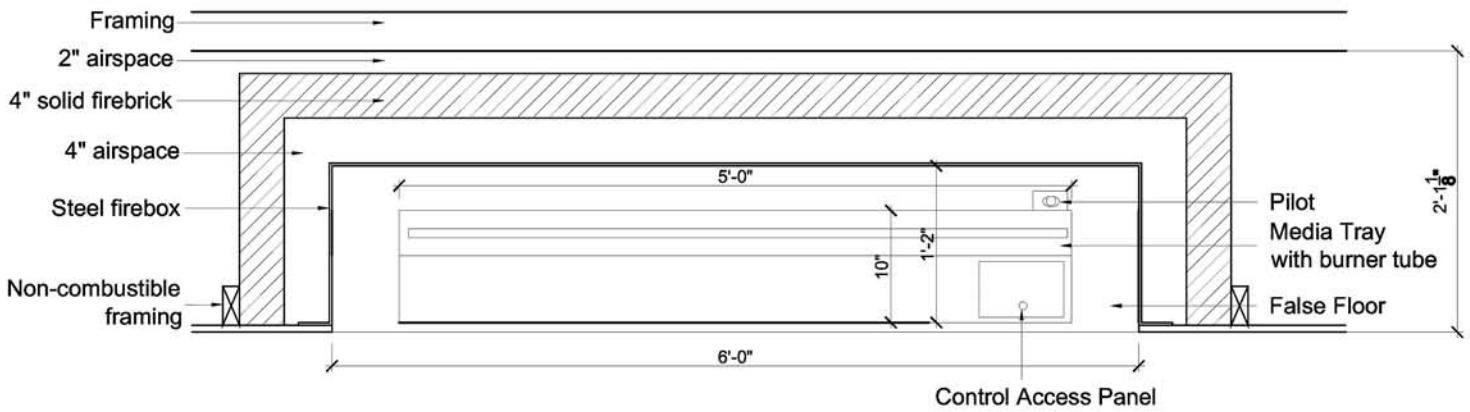
The process for installing the 8' Linear Burner System



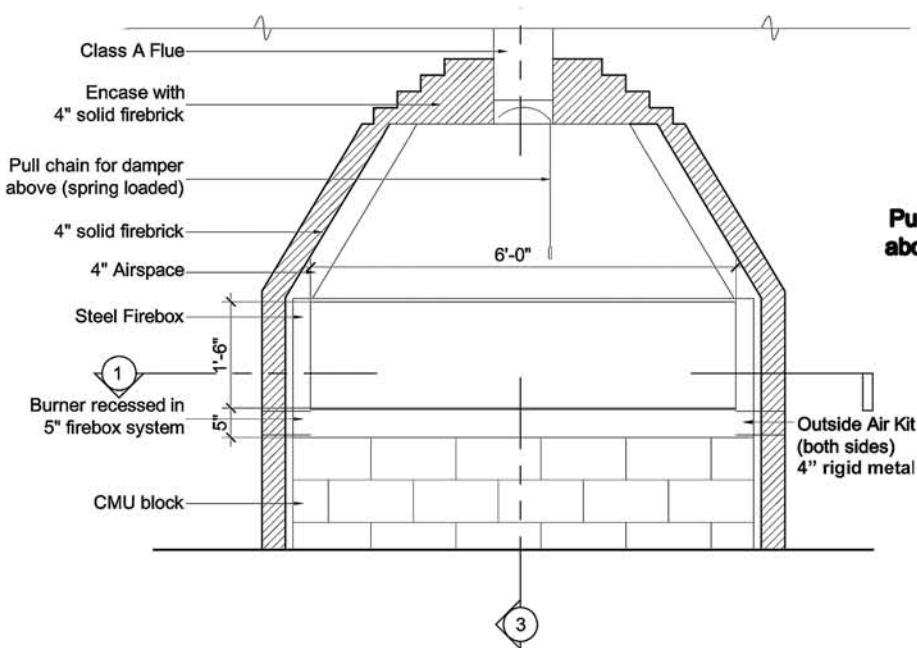
Finished Linear Burner System

Steel Liner Masonry Fireplace with the Linear Burner System

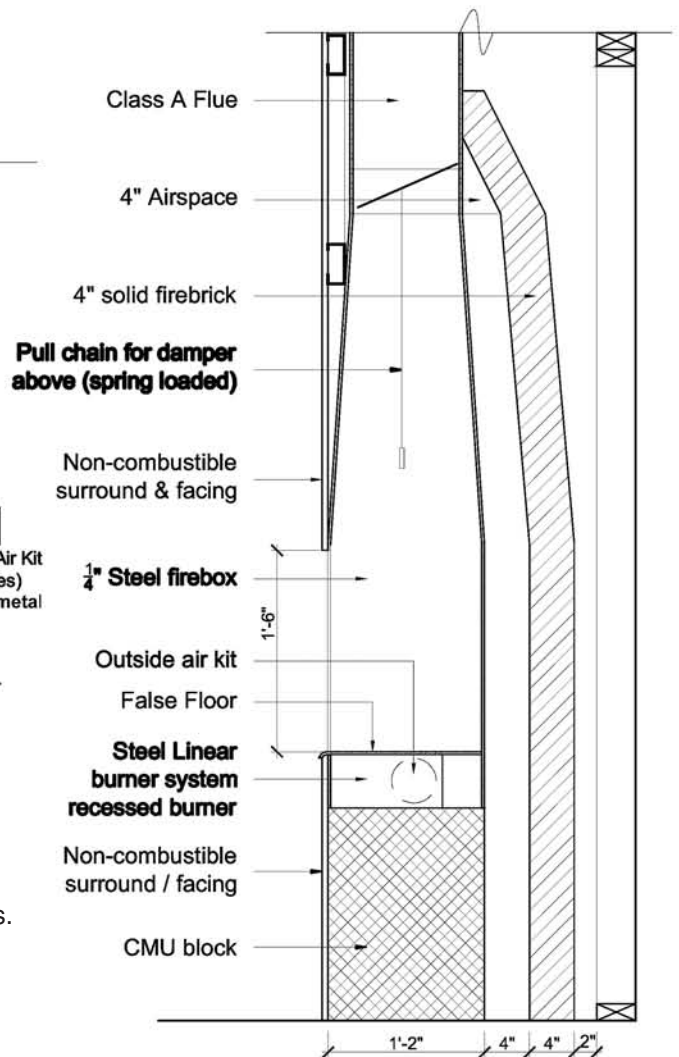
1 Fireplace Plan 1"=1'-0"



2 Fireplace Elevation 1/2"=1'-0"



3 Section thru Fireplace 1"=1'-0"



This is a sample illustration of a steel liner masonry fireplace which incorporate the requirements of the IRC for wood burning fireplaces. We do not represent that this will meet all state and local codes. Architects, designers, builders and masons must have their plans modified to comply with all applicable state and local codes.